




M16 Receptacle Selection Guide

Mounting Style	Image	Panel Thread Types	Page
<p><b>Front Mount</b></p>	 <p>A 3D rendering of a front-mount M16 receptacle. The receptacle is shown inserted into a panel with a circular cutout. A hex nut is shown separately to the right of the panel cutout.</p>	<p><u>M18</u> <u>G12</u></p> <p><u>M20</u> <u>G14</u></p> <p><u>1/2-14 NPT</u> <u>G16</u></p> <p><u>3/8-18 NPT</u> <u>G18</u></p>	
<p><b>Rear Mount</b></p>	 <p>A 3D rendering of a rear-mount M16 receptacle. The receptacle is shown inserted into a panel with a circular cutout. A hex nut is shown separately to the left of the panel cutout.</p>	<p><u>M18</u> <u>G22</u></p>	
<p><b>PCB Mount</b></p>	 <p>A 3D rendering of a PCB-mount M16 receptacle. The receptacle is shown inserted into a panel with a circular cutout. A hex nut is shown separately to the left of the panel cutout.</p>	<p><u>PCB</u> <u>G24</u></p>	

We reserve the right to make technical alterations without prior notice.

Receptacles

## 5 - 8 Pin Receptacles, Front Mount

- IEC IP67 Protection



Connector Style	Female Part Number	Male Part Number	Features	Pinout
<p><b>BKF ..(5-8 pin)</b></p>	<b>BKF 5-5-*</b>	<b>BSF 5-5-*</b>	5x20 AWG, 105 °C, 300 VAC/VDC, 8 A, 5-Wire DC Application	<p><b>Female</b></p> <p><b>Male</b></p>
	<b>BKF 6-6-*</b>	<b>BSF 6-6-*</b>	6x20 AWG, 105 °C, 300 VAC/VDC, 7 A, 6-Wire DC Application	<p><b>Female</b></p> <p><b>Male</b></p>
	<b>BKF 7-7-*</b>	<b>BSF 7-7-*</b>	7x20 AWG, 105 °C, 125 VAC/VDC, 7 A, 7-Wire DC Application	<p><b>Female</b></p> <p><b>Male</b></p>
	<b>BKF 8-8-*</b>	<b>BSF 8-8-*</b>	8x20 AWG, 105 °C, 125 VAC/VDC, 7 A, 8-Wire DC Application	<p><b>Female</b></p> <p><b>Male</b></p>

We reserve the right to make technical alterations without prior notice.

\* Length in meters. Standard lead length is 0.5 meters. Consult factory for other lengths.  
Standard housing material is nickel plated brass.  
To specify PVC jacketed cable, add "/S717" to the end of the part number.

## 12, 14 and 19-Pin Receptacles, Front Mount

- For use with Junction Box Home Run Cables
- IEC IP67 Protection



Connector Style	Female Part Number	Male Part Number	Features	Pinout		
<p><b>BKF ..(12, 14, 19 pin)</b></p> <p>Typical panel cutout is 18 x 17 mm</p>	<b>BKF 12-12-*</b>	<b>BSF 12-12-*</b>	12x24 AWG, 105 °C, 125 VAC/VDC, 4 A, mates with 12-pin connectors, 12 conductors	<p><b>Female</b></p> <p><b>Male</b></p>		
	<b>BKF 14-10-*</b>	<b>BSF 14-10-*</b>	10x24 AWG, 105 °C, 30 VAC/VDC, 3 A, mates with 14-pin connectors, 10 conductors	C. GY E. GN G. BK M. BN N. PK	O. YE P. WH R. RD S. VT U. BU	<p><b>Female</b></p>
	<b>BKF 14-12-*</b>	<b>BSF 14-12-*</b>	12x24 AWG, 105 °C, 30 VAC/VDC, 3 A, mates with 14-pin connectors, 12 conductors	C. OG E. BK G. GN J. GY M. BN N. TN	O. VT P. RD R. WH S. YE T. PK U. BU	<p><b>Male</b></p>
	<b>BKF 14-14-*</b>	<b>BSF 14-14-*</b>	14x24 AWG, 105 °C, 30 VAC/VDC, 3 A, mates with 14-pin connectors, 14 conductors	A. BN C. RD/BU E. BK G. PK J. GN L. BU M. OG	N. GY/BN O. VT P. WH R. RD S. GY T. YE U. TN	<p><b>Female</b></p>
<p><b>BSF ..(12, 14, 19 pin)</b></p> <p>Typical panel cutout is 18 x 17 mm</p>	<b>BKF 19-19-*</b>	<b>BSF 19-19-*</b>	19x24 AWG, 105 °C, 30 VAC/VDC, 3 A, mates with 19-pin connectors, 19 conductors	A. BU B. GY/PK C. RD/BU D. WH/GN E. BK F. BN/GN G. PK H. WH/YE I. GN K. YE/BN	L. BN M. OG N. GY/BN O. VT P. WH R. RD S. GY T. YE U. TN	<p><b>Female</b></p> <p><b>Male</b></p>

We reserve the right to make technical alterations without prior notice.

Receptacles

\* Length in meters. Standard lead length is 0.5 meters. Consult factory for other lengths. Standard housing material is nickel plated brass. To specify PVC jacketed cable, add "/S717" to the end of the part number.

• IEC IP67 Protection



Connector Style	Female Part Number	Male Part Number	Features	Pinout
<p><b>BKF .. M18 (5-8 pin)</b></p> <p>Typical panel cutout is 18.6 mm</p>	<b>BKF 5-5-*/M18</b>	<b>BSF 5-5-*/M18</b>	5x18 AWG, 105 °C, 300 VAC/VDC, 8 A, 5-wire DC application	<p><b>Female</b></p> <p><b>Male</b></p>
	<b>BKF 6-6-*/M18</b>	<b>BSF 6-6-*/M18</b>	6x18 AWG, 105 °C, 300 VAC/VDC, 7 A, 6-wire DC application	<p><b>Female</b></p> <p><b>Male</b></p>
	<b>BKF 7-7-*/M18</b>	<b>BSF 7-7-*/M18</b>	7x18 AWG, 105 °C, 125 VAC/VDC, 7 A, 7-wire DC application	<p><b>Female</b></p> <p><b>Male</b></p>
	<b>BKF 8-8-*/M18</b>	<b>BSF 8-8-*/M18</b>	8x18 AWG, 105 °C, 125 VAC/VDC, 7 A, 8-wire DC application	<p><b>Female</b></p> <p><b>Male</b></p>

We reserve the right to make technical alterations without prior notice.

\* Length in meters. Standard lead length is 0.5 meters. Consult factory for other lengths.  
 Standard housing material is nickel plated brass "BSF.." and "BSFV.." indicates stainless steel.  
 To specify PVC jacketed cable, add "/S717" to the end of the part number.

## 12, 14 and 19-Pin Receptacles, Front Mount, M18 Threads

- For use with Junction Box Home Run Cables
- IEC IP67 Protection



Connector Style	Female Part Number	Male Part Number	Features	Pinout		
<p><b>BKF .. M18 (12, 14, 19 pin)</b></p> <p>Typical panel cutout is 18.6 mm</p>	<b>BKF 12-12-*/M18</b>	<b>BSF 12-12-*/M18</b>	12x22 AWG, 105 °C, 125 VAC/VDC, 4 A, mates with 12-pin connectors, 12 conductors	A. BN B. BU C. WH D. GN E. YE F. GY G. PK H. RD J. BK K. OG L. TN M. VT	<p><b>Female</b></p> <p><b>Male</b></p>	
	<b>BKF 14-10-*/M18</b>	<b>BSF 14-10-*/M18</b>	10x22 AWG, 105 °C, 30 VAC/VDC, 3 A, mates with 14-pin connectors, 10 conductors	C. GY E. GN G. BK M. BN N. PK	O. YE P. WH R. RD S. VT U. BU	<p><b>Female</b></p>
	<b>BKF 14-12-*/M18</b>	<b>BSF 14-12-*/M18</b>	12x22 AWG 105 °C 30 VAC/VDC, 3 A mates with 14-pin connectors, 12 conductors	C. OG E. BK G. GN J. GY M. BN N. TN	O. VT P. RD R. WH S. YE T. PK U. BU	<p><b>Male</b></p>
	<b>BKF 14-14-*/M18</b>	<b>BSF 14-14-*/M18</b>	14x22 AWG, 105 °C, 30 VAC/VDC, 3 A, mates with 14-pin connectors, 14 conductors	A. BN C. RD/BU E. BK G. PK J. GN L. BU M. OG	N. GY/BN O. VT P. WH R. RD S. GY T. YE U. TN	<p><b>Female</b></p>
<p><b>BSF .. M18 (12, 14, 19 pin)</b></p> <p>Typical panel cutout is 18.6 mm</p>	<b>BKF 19-19-*/M18</b>	<b>BSF 19-19-*/M18</b>	19x22 AWG, 105 °C, 30 VAC/VDC, 3 A, mates with 19-pin connectors, 19 conductors	A. BU B. GY/PK C. RD/BU D. WH/GN E. BK F. BN/GN G. PK H. WH/YE I. GN K. YE/BN	L. BN M. OG N. GY/BN O. VT P. WH R. RD S. GY T. YE U. TN	<p><b>Female</b></p> <p><b>Male</b></p>

We reserve the right to make technical alterations without prior notice.

Receptacles

\* Length in meters. Standard lead length is 0.5 meters. Consult factory for other lengths. Standard housing material is nickel plated brass "BSF.." and "BSFV.." indicates stainless steel. To specify PVC jacketed cable, add "/S717" to the end of the part number.

• IEC IP67 Protection



Connector Style	Female Part Number	Male Part Number	Features	Pinout
<p><b>BKF ..M20 (5-8 pin)</b></p>	<b>BKF 5-5-*/M20</b>	<b>BSF 5-5-*/M20</b>	5x18 AWG, 105 °C, 300 VAC/VDC, 8 A, 5-Wire DC applications	<p><b>Female</b></p> <p><b>Male</b></p>
	<b>BKF 6-6-*/M20</b>	<b>BSF 6-6-*/M20</b>	6x18 AWG, 105 °C, 300 VAC/VDC, 7 A, 6-Wire DC applications	<p><b>Female</b></p> <p><b>Male</b></p>
<p><b>BSF ..M20 (5-8 pin)</b></p>	<b>BKF 7-7-*/M20</b>	<b>BSF 7-7-*/M20</b>	7x18 AWG, 105 °C, 125 VAC/VDC, 7 A, 7-Wire DC applications	<p><b>Female</b></p> <p><b>Male</b></p>
	<b>BKF 8-8-*/M20</b>	<b>BSF 8-8-*/M20</b>	8x18 AWG, 105 °C, 125 VAC/VDC, 7 A, 8-Wire DC applications	<p><b>Female</b></p> <p><b>Male</b></p>

We reserve the right to make technical alterations without prior notice.

\* Length in meters. Standard lead length is 0.5 meters. Consult factory for other lengths.  
Standard housing material is nickel plated brass "BSF.." and "BSFV.." indicates stainless steel.  
To specify PVC jacketed cable, add "/S717" to the end of the part number.



## 12, 14 and 19-Pin Receptacles, Front Mount, M20 Threads

- For use with Junction Box Home Run Cables
- IEC IP67 Protection



Connector Style	Female Part Number	Male Part Number	Features	Pinout
<p><b>BKF ..M20 (12, 14, 19 pin)</b></p> <p>Typical panel cutout is 18.6 mm</p>	<b>BKF 12-12-*/M20</b>	<b>BSF 12-12-*/M20</b>	12x22 AWG, 105 °C, 125 VAC/VDC, 4 A, mates with 12-pin connectors, 12 conductors	<p><b>Female</b></p> <p><b>Male</b></p>
	<b>BKF 14-10-*/M20</b>	<b>BSF 14-10-*/M20</b>	10x22 AWG, 105 °C, 30 VAC/VDC, 3 A, mates with 14-pin connectors, 10 conductors	<p><b>Female</b></p>
<p><b>BSF ..M20 (12, 14, 19 pin)</b></p> <p>Typical panel cutout is 20.4 mm</p>	<b>BKF 14-12-*/M20</b>	<b>BSF 14-12-*/M20</b>	12x22 AWG, 105 °C, 30 VAC/VDC, 3 A, mates with 14-pin connectors, 12 conductors	<p><b>Female</b></p> <p><b>Male</b></p>
	<b>BKF 14-14-*/M20</b>	<b>BSF 14-14-*/M20</b>	14x22 AWG, 105 °C, 30 VAC/VDC, 3 A, mates with 14-pin connectors, 14 conductors	<p><b>Female</b></p> <p><b>Male</b></p>
	<b>BKF 19-19-*/M20</b>	<b>BSF 19-19-*/M20</b>	19x22 AWG, 105 °C, 30 VAC/VDC, 3 A, mates with 19-pin connectors, 19 conductors	<p><b>Female</b></p> <p><b>Male</b></p>

We reserve the right to make technical alterations without prior notice.

Receptacles

\* Length in meters. Standard lead length is 0.5 meters. Consult factory for other lengths. Standard housing material is nickel plated brass "BSF.." and "BSFV.." indicates stainless steel. To specify PVC jacketed cable, add "/S717" to the end of the part number.

• IEC IP67 Protection



Connector Style	Female Part Number	Male Part Number	Features	Pinout
<p><b>BKF ..1/2-14 NPT (5-8 pin)</b></p> <p>Typical panel cutout is 17.5 mm</p>	<b>BKF 5-5-*/14.5/NPT</b>	<b>BSF 5-5-*/14.5/NPT</b>	5x18 AWG, 105 °C, 300 VAC/VDC, 8 A, 5-Wire DC applications	<p><b>Female</b></p> <p><b>Male</b></p> <p>1. BN 2. WH 3. BU 4. BK 5. GY</p>
<p><b>BKF 6-6-*/14.5/NPT</b></p> <p>Typical panel cutout is 17.5 mm</p>	<b>BKF 6-6-*/14.5/NPT</b>	<b>BSF 6-6-*/14.5/NPT</b>	6x18 AWG, 105 °C, 300 VAC/VDC, 7 A, 6-Wire DC applications	<p><b>Female</b></p> <p><b>Male</b></p> <p>1. BN 2. WH 3. BU 4. BK 5. GY 6. PK</p>
<p><b>BSF ..1/2-14 NPT (5-8 pin)</b></p> <p>Typical panel cutout is 22.5 mm</p>	<b>BKF 7-7-*/14.5/NPT</b>	<b>BSF 7-7-*/14.5/NPT</b>	7x18 AWG, 105 °C, 125 VAC/VDC, 7 A, 7-Wire DC applications	<p><b>Female</b></p> <p><b>Male</b></p> <p>1. WH 2. BN 3. GN 4. YE 5. GY 6. PK 7. BU</p>
<p><b>BSF ..1/2-14 NPT (5-8 pin)</b></p> <p>Typical panel cutout is 22.5 mm</p>	<b>BKF 8-8-*/14.5/NPT</b>	<b>BSF 8-8-*/14.5/NPT</b>	8x18 AWG, 105 °C, 125 VAC/VDC, 7 A, 8-Wire DC applications	<p><b>Female</b></p> <p><b>Male</b></p> <p>1. WH 2. BN 3. GN 4. YE 5. GY 6. PK 7. BU 8. RD</p>

We reserve the right to make technical alterations without prior notice.

\* Length in meters. Standard lead length is 0.5 meters. Consult factory for other lengths.  
Standard housing material is nickel plated brass "BSF.." and "BSFV.." indicates stainless steel.  
To specify PVC jacketed cable, add "/S717" to the end of the part number.



## 12, 14 and 19-Pin Receptacles, Front Mount, 1/2-14 NPT Threads

- For use with Junction Box Home Run Cables
- IEC IP67 Protection



Connector Style	Female Part Number	Male Part Number	Features	Pinout		
<p><b>BKF ..1/2-14 NPT (12, 14, 19 pin)</b></p>	<b>BKF 12-12-*/14.5/NPT</b>	<b>BSF 12-12-*/14.5/NPT</b>	12x22 AWG, 105 °C, 125 VAC/VDC, 4 A, mates with 12-pin connectors, 12 conductors	A. BN	G. PK	<p><b>Female</b></p> <p><b>Male</b></p>
				B. BU	H. RD	
				C. WH	J. BK	
				D. GN	K. OG	
				E. YE	L. TN	
				F. GY	M. VT	
	<b>BKF 14-10-*/14.5/NPT</b>	<b>BSF 14-10-*/14.5/NPT</b>	10x22 AWG, 105 °C, 30 VAC/VDC, 3 A, mates with 14-pin connectors, 10 conductors	C. GY	O. YE	<p><b>Female</b></p>
				E. GN	P. WH	
				G. BK	R. RD	
				M. BN	S. VT	
				N. PK	U. BU	
	<b>BKF 14-12-*/14.5/NPT</b>	<b>BSF 14-12-*/14.5/NPT</b>	12x22 AWG, 105 °C, 30 VAC/VDC, 3 A, mates with 14-pin connectors, 12 conductors	C. OG	O. VT	<p><b>Male</b></p>
				E. BK	P. RD	
				G. GN	R. WH	
				J. GY	S. YE	
				M. BN	T. PK	
				N. TN	U. BU	
	<b>BKF 14-14-*/14.5/NPT</b>	<b>BSF 14-14-*/14.5/NPT</b>	14x22 AWG, 105 °C, 30 VAC/VDC, 3 A, mates with 14-pin connectors, 14 conductors	A. BN	N. GY/BN	<p><b>Female</b></p>
				C. RD/BU	O. VT	
				E. BK	P. WH	
				G. PK	R. RD	
				J. GN	S. GY	
				L. BU	T. YE	
				M. OG	U. TN	
	<b>BKF 19-19-*/14.5/NPT</b>	<b>BSF 19-19-*/14.5/NPT</b>	19x22 AWG, 105 °C, 30 VAC/VDC, 3 A, mates with 19-pin connectors, 19 conductors	A. BU	L. BN	<p><b>Female</b></p>
				B. GY/PK	M. OG	
				C. RD/BU	N. GY/BN	
				D. WH/GN	O. VT	
				E. BK	P. WH	
				F. BN/GN	R. RD	
				G. PK	S. GY	
				H. WH/YE	T. YE	
				I. GN	U. TN	
				K. YE/BN		

We reserve the right to make technical alterations without prior notice.

Receptacles

\* Length in meters. Standard lead length is 0.5 meters. Consult factory for other lengths. Standard housing material is nickel plated brass "BSF.." and "BSFV.." indicates stainless steel. To specify PVC jacketed cable, add "/S717" to the end of the part number.

• IEC IP67 Protection



Connector Style	Female Part Number	Male Part Number	Features	Pinout
<p><b>BKF ..3/8-18 NPT (5-8 pin)</b></p> <p>Typical panel cutout is 17.5 mm</p>	<b>BKF 5-5-*/18.375/NPT</b>	<b>BSF 5-5-*/18.375/NPT</b>	5x18 AWG, 105 °C, 300 VAC/VDC, 8 A, 5-Wire DC applications	<p><b>Female</b></p> <p><b>Male</b></p>
<p><b>BKF 6-6-*/18.375/NPT</b></p> <p>Typical panel cutout is 17.5 mm</p>	<b>BKF 6-6-*/18.375/NPT</b>	<b>BSF 6-6-*/18.375/NPT</b>	6x18 AWG, 105 °C, 300 VAC/VDC, 7 A, 6-Wire DC applications	<p><b>Female</b></p> <p><b>Male</b></p>
<p><b>BSF ..3/8-18 NPT (5-8 pin)</b></p> <p>Typical panel cutout is 17.5 mm</p>	<b>BKF 7-7-*/18.375/NPT</b>	<b>BSF 7-7-*/18.375/NPT</b>	7x18 AWG, 105 °C, 125 VAC/VDC, 7 A, 7-Wire DC applications	<p><b>Female</b></p> <p><b>Male</b></p>
<p><b>BSF ..3/8-18 NPT (5-8 pin)</b></p> <p>Typical panel cutout is 17.5 mm</p>	<b>BKF 8-8-*/18.375/NPT</b>	<b>BSF 8-8-*/18.375/NPT</b>	8x18 AWG, 105 °C, 125 VAC/VDC, 7 A, 8-Wire DC applications	<p><b>Female</b></p> <p><b>Male</b></p>

We reserve the right to make technical alterations without prior notice.

\* Length in meters. Standard lead length is 0.5 meters. Consult factory for other lengths.  
 Standard housing material is nickel plated brass "BSF..".  
 To specify PVC jacketed cable, add "/S717" to the end of the part number.



## 12, 14 and 19-Pin Receptacles, Front Mount, 3/8-18 NPT Threads

- For use with Junction Box Home Run Cables
- IEC IP67 Protection



Connector Style	Female Part Number	Male Part Number	Features	Pinout
<p><b>BKF ..3/8-18 NPT (12, 14, 19 pin)</b></p> <p>Typical panel cutout is 17.5 mm</p>	<b>BKF 12-12-*/18.375/NPT</b>	<b>BSF 12-12-*/18.375/NPT</b>	12x22 AWG, 105 °C, 125 VAC/VDC, 4 A, mates with 12-pin connectors, 12 conductors	<p><b>Female</b></p> <p><b>Male</b></p>
				<p><b>BKF 14-10-*/18.375/NPT</b></p> <p><b>BKF 14-12-*/18.375/NPT</b></p>
<p><b>BSF ..3/8-18 NPT (12, 14, 19 pin)</b></p> <p>Typical panel cutout is 17.5 mm</p>	<b>BKF 14-14-*/18.375/NPT</b>	<b>BSF 14-14-*/18.375/NPT</b>	14x22 AWG, 105 °C, 30 VAC/VDC, 3 A, mates with 14-pin connectors, 14 conductors	<p><b>Female</b></p> <p><b>Male</b></p>
				<b>BKF 19-19-*/18.375/NPT</b>

We reserve the right to make technical alterations without prior notice.

Receptacles

\* Length in meters. Standard lead length is 0.5 meters. Consult factory for other lengths. Standard housing material is nickel plated brass "BSF..". To specify PVC jacketed cable, add "/S717" to the end of the part number.

## 5 - 8 Wire Receptacles, Rear Mount

- IEC IP67 Protection



Connector Style	Female Part Number	Male Part Number	Features	Pinout
<p><b>BKFD .. (5-8 pin)</b></p> <p>Typical panel cutout is 18 x 17 mm</p>	<b>BKFD 5-5-*</b>	<b>BSFD 5-5-*</b>	5x20 AWG, 105 °C, 300 VAC/VDC, 8 A, 5-Wire DC application	<p><b>Female</b></p> <p><b>Male</b></p>
	<b>BKFD 6-6-*</b>	<b>BSFD 6-6-*</b>	6x20 AWG, 105 °C, 300 VAC/VDC, 7 A, 6-Wire DC application	<p><b>Female</b></p> <p><b>Male</b></p>
	<b>BKFD 7-7-*</b>	<b>BSFD 7-7-*</b>	7x20 AWG, 105 °C, 125 VAC/VDC, 7 A, 7-Wire DC application	<p><b>Female</b></p> <p><b>Male</b></p>
	<b>BKFD 8-8-*</b>	<b>BSFD 8-8-*</b>	8x20 AWG, 105 °C, 125 VAC/VDC, 7 A, 8-Wire DC application	<p><b>Female</b></p> <p><b>Male</b></p>

We reserve the right to make technical alterations without prior notice.

\* Length in meters. Standard lead lengths is 0.5 meters. Consult factory for other lengths.  
 Standard housing material is nickel plated brass.  
 To specify PVC jacketed cable, add "/S717" to the end of the part number.



## 12, 14 and 19-Pin Receptacles, Rear Mount

- For use with Junction Box Home Run Cables
- IEC IP67 Protection



Connector Style	Female Part Number	Male Part Number	Features	Pinout
<p><b>BKFD ..(12, 14, 19 pin)</b></p> <p>Typical panel cutout is 18 x 17 mm</p>	<b>BKFD 12-12-*</b>	<b>BSFD 12-12-*</b>	12x24 AWG, 105 °C, 125 VAC/VDC, 4 A, mates with 12-pin connectors, 12 conductors	<p><b>Female</b></p> <p><b>Male</b></p>
	<b>BKFD 14-10-*</b>	<b>BSFD 14-10-*</b>	10x24 AWG, 105 °C, 30 VAC/VDC, 3 A, mates with 14-pin connectors, 10 conductors	<p><b>Female</b></p>
	<b>BKFD 14-12-*</b>	<b>BSFD 14-12-*</b>	12x24 AWG, 105 °C, 30 VAC/VDC, 3 A, mates with 14-pin connectors, 12 conductors	<p><b>Female</b></p> <p><b>Male</b></p>
	<b>BKFD 14-14-*</b>	<b>BSFD 14-14-*</b>	14x24 AWG, 105 °C, 30 VAC/VDC, 3 A, mates with 14-pin connectors, 14 conductors	<p><b>Female</b></p> <p><b>Male</b></p>
	<b>BKFD 19-19-*</b>	<b>BSFD 19-19-*</b>	19x24 AWG, 105 °C, 30 VAC/VDC, 3 A, mates with 19-pin connectors, 19 conductors	<p><b>Female</b></p> <p><b>Male</b></p>

We reserve the right to make technical alterations without prior notice.

Receptacles

\* Length in meters. Standard lead lengths is 0.5 meters. Consult factory for other lengths. Standard housing material is nickel plated brass. To specify PVC jacketed cable, add "/S717" to the end of the part number.

• IEC IP67 Protection



Connector Style	Female Part Number	Male Part Number	Features	Pinout
<p><b>BKFD .. M18 (5-8 pin)</b></p> <p>Typical panel cutout is 18.6 mm</p>	<b>BKFD 5-5-*/M18</b>	<b>BSFD 5-5-*/M18</b>	5x18 AWG, 105 °C, 300 VAC/VDC, 8 A, 5-Wire DC applications	<p><b>Female</b></p> <p><b>Male</b></p>
	<b>BKFD 6-6-*/M18</b>	<b>BSFD 6-6-*/M18</b>	6x18 AWG, 105 °C, 300 VAC/VDC, 7 A, 6-Wire DC applications	<p><b>Female</b></p> <p><b>Male</b></p>
<p><b>BSFD.. M18 (5-8 pin)</b></p> <p>Typical panel cutout is 18.6 mm</p>	<b>BKFD 7-7-*/M18</b>	<b>BSFD 7-7-*/M18</b>	7x18 AWG, 105 °C, 125 VAC/VDC, 7 A, 7-Wire DC applications	<p><b>Female</b></p> <p><b>Male</b></p>
	<b>BKFD 8-8-*/M18</b>	<b>BSFD 8-8-*/M18</b>	8x18 AWG, 105 °C, 125 VAC/VDC, 7 A, 8-Wire DC applications	<p><b>Female</b></p> <p><b>Male</b></p>

We reserve the right to make technical alterations without prior notice.

\* Length in meters. Standard lead length is 0.5 meter. Consult factory for other lengths. Standard housing material is nickel plated brass. "BSFDV.." indicates stainless steel. To specify PVC jacketed cable, add "/S717" to the end of the part number.

## 12, 14 and 19-Pin Receptacles, Rear Mount, M18 Threads

• IEC IP67 Protection



Connector Style	Female Part Number	Male Part Number	Features	Pinout		
<p><b>BKFD .. M18 (12, 14, 19 pin)</b></p> <p>Typical panel cutout is 18.6 mm</p>	<b>BKFD 12-12-*/M18</b>	<b>BSFD 12-12-*/M18</b>	12x22 AWG, 105 °C, 125 VAC/VDC, 4 A, mates with 12-pin connectors, 12 conductors	A. BN B. BU C. WH D. GN E. YE F. GY	G. PK H. RD J. BK K. OG L. TN M. VT	<p><b>Female</b></p> <p><b>Male</b></p>
	<b>BKFD 14-10-*/M18</b>	<b>BSFD 14-10-*/M18</b>	10x22 AWG, 105 °C, 30 VAC/VDC, 3 A, mates with 14-pin connectors, 10 conductors	C. GY E. GN G. BK M. BN N. PK	O. YE P. WH R. RD S. VT U. BU	<p><b>Female</b></p>
	<b>BKFD 14-12-*/M18</b>	<b>BSFD 14-12-*/M18</b>	12x22 AWG, 105 °C, 30 VAC/VDC, 3 A, mates with 14-pin connectors, 12 conductors	C. OG E. BK G. GN J. GY M. BN N. TN	O. VT P. RD R. WH S. YE T. PK U. BU	<p><b>Male</b></p>
	<b>BKFD 14-14-*/M18</b>	<b>BSFD 14-14-*/M18</b>	14x22 AWG, 105 °C, 30 VAC/VDC, 3 A, mates with 14-pin connectors, 14 conductors	A. BN C. RD/BU E. BK G. PK J. GN L. BU M. OG	N. GY/BN O. VT P. WH R. RD S. GY T. YE U. TN	<p><b>Male</b></p>
<p><b>BSFD.. M18 (12, 14, 19 pin)</b></p> <p>Typical panel cutout is 18.6 mm</p>	<b>BKFD 19-19-*/M18</b>	<b>BSFD 19-19-*/M18</b>	19x22 AWG, 105 °C, 30 VAC/VDC, 3 A, mates with 19-pin connectors, 19 conductors	A. BU B. GY/PK C. RD/BU D. WH/GN E. BK F. BN/GN G. PK H. WH/YE I. GN K. YE/BN	L. BN M. OG N. GY/BN O. VT P. WH R. RD S. GY T. YE U. TN	<p><b>Female</b></p> <p><b>Male</b></p>

We reserve the right to make technical alterations without prior notice.

Receptacles

\* Length in meters. Standard lead length is 0.5 meter. Consult factory for other lengths. Standard housing material is nickel plated brass. "BSFDV.." indicates stainless steel. To specify PVC jacketed cable, add "/S717" to the end of the part number.

## 5 - 8 Pin Receptacles, Rear Mount, PCB Pins

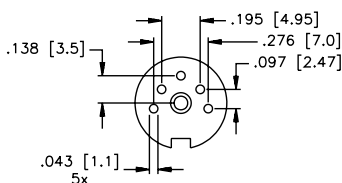
- Locknuts and O-rings included
- Easy Keyway Orientation
- IEC IP67 Protection



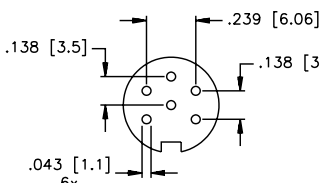
Connector Style	Female Part Number	Male Part Number	Features	Pinout
	<b>BKFD 5-PCB</b>	<b>BSFD 5-PCB</b>	Nickel plated brass, 5-pin PCB pins, 105 °C, 60 V, 5 A, M18 x .75 threads, mates with 5-pin cordsets	
	<b>BKFD 6-PCB</b>	<b>BSFD 6-PCB</b>	Nickel plated brass, 5-pin PCB pins, 105 °C, 250 V, 5 A, M18 x .75 threads, mates with 6-pin cordsets	
	<b>BKFD 7-PCB</b>	<b>BSFD 7-PCB</b>	Nickel plated brass, 5-pin PCB pins, 105 °C, 60 V, 5 A, M18 x .75 threads, mates with 7-pin cordsets	
	<b>BKFD 8-PCB</b>	<b>BSFD 8-PCB</b>	Nickel plated brass, 5-pin PCB pins, 105 °C, 60 V, 5 A, M18 x .75 threads, mates with 8-pin cordsets	

We reserve the right to make technical alterations without prior notice.

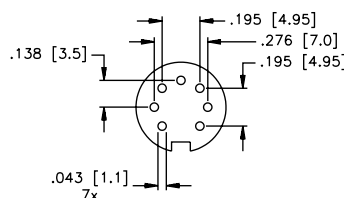
5-Pin PCB Layout



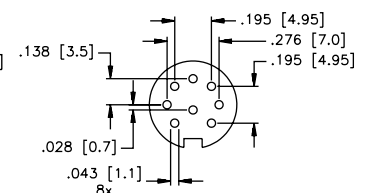
6-Pin PCB Layout



7-Pin PCB Layout



8-Pin PCB Layout



## 12, 14 and 19-Pin Receptacles, Rear Mount, PCB Pins

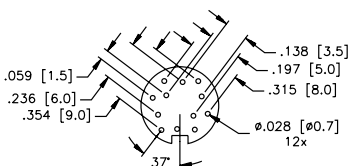
- Locknuts and O-rings included
- Easy Keyway Orientation
- IEC IP67 Protection



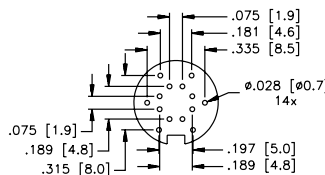
We reserve the right to make technical alterations without prior notice.

Connector Style	Female Part Number	Male Part Number	Features	Pinout
<p><b>BKFD ..PCB (12, 14, 19 pin)</b></p>	<b>BKFD 12-PCB</b>	<b>BSFD 12-PCB</b>	Nickel plated brass, 12-pin PCB pins, 105 °C, 60 V, 3 A, M18 x .75 threads, mates with 12-pin cordsets	<p><b>Female</b></p> <p><b>Male</b></p>
<p><b>BKFD 14-PCB</b></p>	<b>BKFD 14-PCB</b>	<b>BSFD 14-PCB</b>	Nickel plated brass, 14-pin PCB pins, 105 °C, 60 V, 3 A, M18 x .75 threads, mates with 14-pin cordsets	<p><b>Female</b></p> <p><b>Male</b></p>
<p><b>BSFD ..PCB (12, 14, 19 pin)</b></p>	<b>BKFD 19-PCB</b>	<b>BSFD 19-PCB</b>	Nickel plated brass, 19-pin PCB pins, 105 °C, 60 V, 3 A, M18 x .75 threads, mates with 19-pin cordsets	<p><b>Female</b></p> <p><b>Male</b></p>

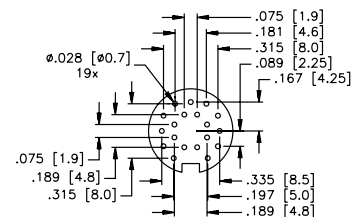
5-Pin PCB Layout



7-Pin PCB Layout



8-Pin PCB Layout



## 12, 14 and 19-Pin Receptacles, Solder Cups, Front and Rear Mount

- Facilitates Field Replacements



Connector Style	Female Part Number	Male Part Number	Features	Pinout
<p><b>BKF (12, 14, 19 pin)</b></p>	<b>BKF 12</b>	<b>BSF 12</b>	Nickel plated brass, solder cup, accepts up to 12x24 AWG conductors, 95 °C, 125 V, 4 A, mates with Picofast® junction boxes, front mount	<p><b>Female</b></p>
	<b>BKFD 12</b>	<b>BSFD 12</b>	Nickel plated brass, solder cup, accepts up to 12x24 AWG conductors, 95 °C, 125 V, 3 A, mates with Picofast junction boxes, rear mount	<p><b>Male</b></p>
<p><b>BKFD (12, 14, 19 pin)</b></p>	<b>BKF 14</b>	<b>BSF 14</b>	Nickel plated brass, solder cup, accepts up to 14x24 AWG conductors, 95 °C, 125 V, 3 A, mates with Picofast junction boxes, front mount	<p><b>Female</b></p>
	<b>BKFD 14</b>	<b>BSFD 14</b>	Nickel plated brass, solder cup, accepts up to 14x24 AWG conductors, 95 °C, 125 V, 3 A, mates with Picofast junction boxes, rear mount	<p><b>Male</b></p>
<p><b>BSF (12, 14, 19 pin)</b></p>	<b>BKF 19</b>	<b>BSF 19</b>	Nickel plated brass, solder cup, accepts up to 19x24 AWG conductors, 95 °C, 125 V, 3 A, mates with Picofast junction boxes, front mount	<p><b>Female</b></p>
<p><b>BSFD (12, 14, 19 pin)</b></p>	<b>BKFD 19</b>	<b>BSFD 19</b>	Nickel plated brass, solder cup, accepts up to 19x24 AWG conductors, 95 °C, 30 V, 3 A, mates with Picofast junction boxes, rear mount	<p><b>Male</b></p>

We reserve the right to make technical alterations without prior notice.